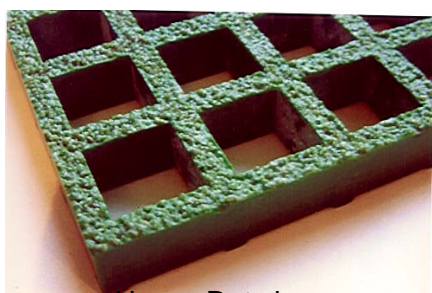




PIPEWALK

ELIMINATES SLIP RISKS WHEN CROSSING PIPE & CASING STACKS

- Tough, lightweight, corrosion-proof heavy-duty GRP construction
 - Quick and easy to fit and relocate
 - Safe, positive anti-slip walking surface



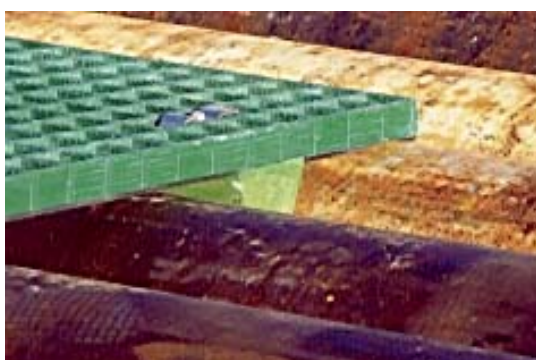
Heavy Duty bars for strength and durability. Increased surface area contact. Permanently gritted anti-slip finish.



Easy one-man operation. Simply lay in position across pipe or casing stacks. Stays firmly in position even in high wind conditions. Positive and safe anti-slip surface reduces accidents and injuries.

Virtually maintenance free

FIRE RATING
ASTM E-84-95 CLASS A
Class 1 equivalent



Our unique locator ensures "PIPEWALK" stays firmly in place, yet it can be instantly and easily lifted or relocated.

SAFE . SIMPLE . QUICK



USE IN ALL WEATHER CONDITIONS - MAINTENANCE FREE

Use multiple "PIPEWALK" panels to create a complete walkway route across even the largest pipe or casing stack

"PIPEWALK" – The safe, reliable, removable walkway system for all drilling operations, or pipe storage areas where operator access across the stacks is necessary.

PIPEWALK

SPECIFICATION and INFORMATION

“PIPEWALK” is constructed from ISOPHTHALLIC CLASS 1 Fire Retardant polyester resins and fibrous glass particles, chemically cured and bonded together. Moulded into panels with 38mm centre grid pattern. Featuring a permanent, resin-bonded anti-slip aggregate surface, and a specially designed glass and resin encapsulated LOCATOR affixed with stainless steel clamps and screws.

“PIPEWALK” DIMENSIONS

<i>Panel Size</i>	<i>Depth</i>	<i>Average Bar Thickness</i>	<i>No of Bars per 300mm</i>	<i>Glass Content</i>	<i>Open Area</i>	<i>Weight Per Panel</i>
2.44m x 466mm	25mm	7mm	8	32%	69%	15kg

MECHANICAL DATA

ELASTIC MODULUS	=	27 Gpa
FLEXURAL STRENGTH	=	2.8 Gpa
TENSILE STRENGTH	=	650 Mpa
COMPRESSIVE STRENGTH	=	90 Mpa
DIELECTRIC STRENGTH	=	18 KW/mm
SPECIFIC GRAVITY	=	1.5 – 1.7
THERMAL EXPANSION	=	13 X 10 ⁻⁶ mm/mm °C
WATER ABSORPTION	=	0.1% + 0.3% X 24 hours
TEMPERATURE RANGE	=	-100°C TO +180°C

FIRE RESISTANCE

ASTM E-84-95 CLASS A
Class 1 equivalent

COLOUR

Standard colour is GREEN. Other colours to order

HAZARD IDENTIFICATION

None by contact. Dust produced by cutting or grinding is considered “nuisance” and may irritate skin. Avoid breathing dust.